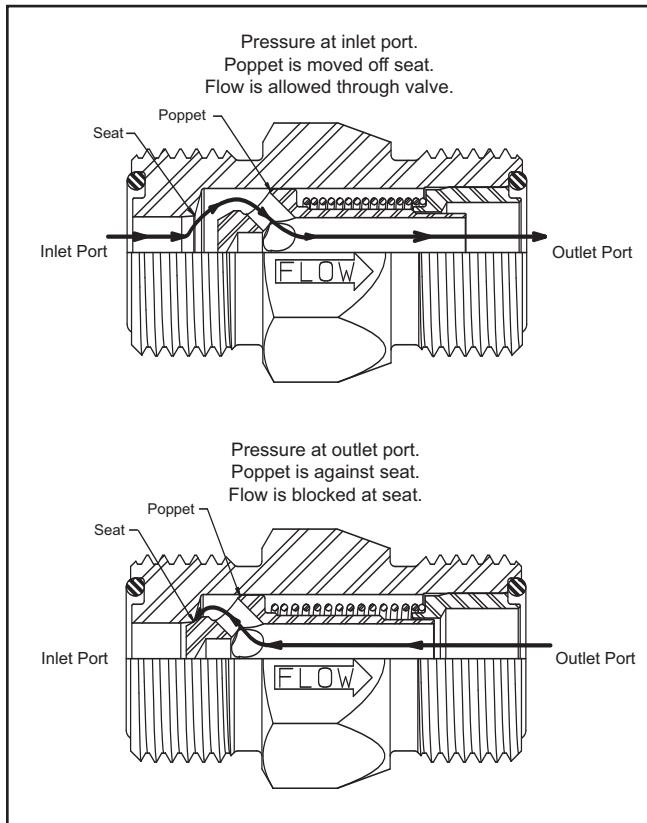


Check Valves



Selection Guide

	Body Size	Material	Rated Pressure	Crack Pressure
CV Series	1/4 - 1"	Steel	3000 PSI	5-130 PSI
DT Series	1/4 - 1 1/4"	Steel	5000 PSI	5-200 PSI

Features

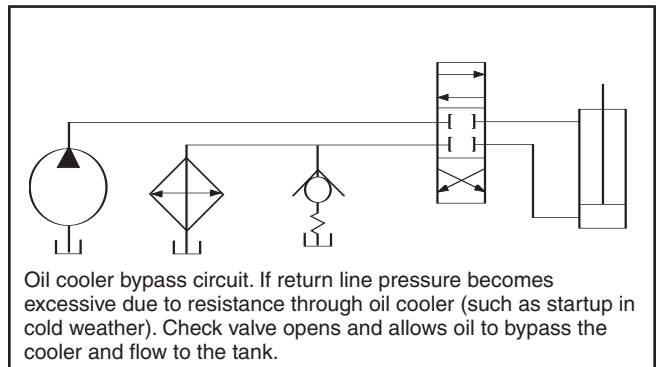
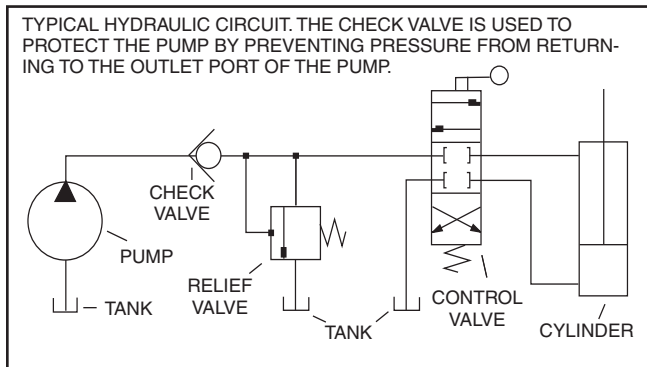
Parker's Check Valves employ several unique features that insure years of trouble-free operation. Specific features for each series of check valves are listed within this section.

Crack Pressure

Crack pressure refers to the amount of fluid pressure in the free flow direction required to move the poppet off the seat. The normal crack pressure setting is 5 PSI; however, other crack pressures are available to allow the check valve to perform special circuit functions, or operate under unique conditions.

Check valves are not field repairable or adjustable. Crack pressure settings are made at the factory only.

Applications



The graphic symbol for a check-valve is:

E Check Valves

Check Valves

Parker DT Series Check Valves Offer the Features of a Compact Body Size, and 5000 PSI Maximum Operating Pressure.

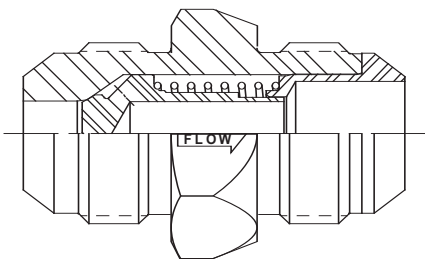
The DT Series check valves utilize the dependable, internal design features found in Parker check valves, but with the added benefit and convenience of compact design. Sizes are available from 1/4" to 1-1/4" with six different Fitting Styles.

The DT Series expands Parker's high quality product line of versatile and efficient check valves.



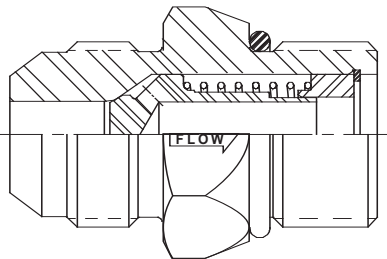
Features:

1. Compact Design. Easy to plumb into tight circuits.
2. All steel construction. No internal gaskets or seals to wear out.
3. One-piece body eliminates threads and seals that may be potential leakage points.
4. Smooth flow stream. Poppet spring is isolated from flow stream.
5. Heat treated poppet to resist damage from shocks and surges.
6. Variety of end fittings.
7. Optional crack pressures available from 1 to 200 PSI.
8. Zinc plated exterior finish.
9. Nitrile O-Ring included on MO and MS fittings.
10. Captive O-Ring Groove is standard on MS end fittings.



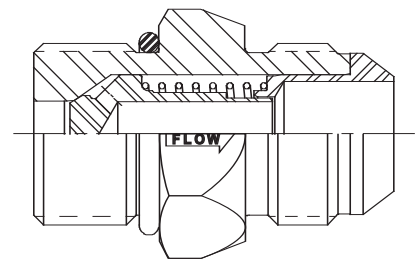
DT-MFMF

Male Flare 37° JIC Inlet to Male Flare 37° JIC Outlet



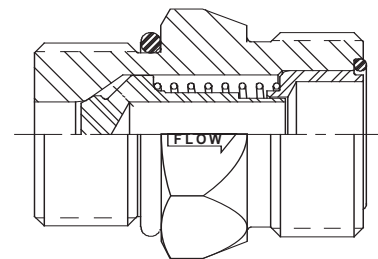
DT-MFMO

Male Flare 37° JIC Inlet to Male O-Ring Boss Outlet



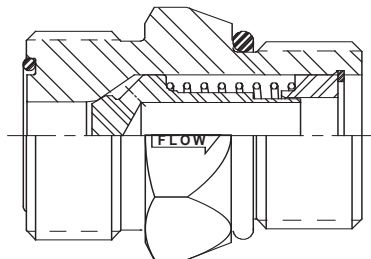
DT-MOMF

Male O-Ring Boss Inlet to Male Flare 37° JIC Outlet



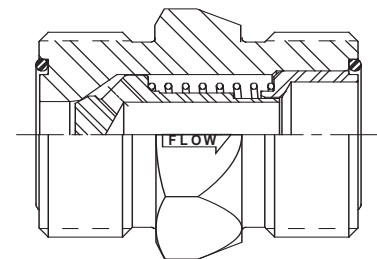
DT-MOMS

Male O-Ring Boss Inlet to Male Seal-Lok® Outlet



DT-MSMO

Male Seal-Lok® Inlet to Male O-Ring Boss Outlet



DT-MSMS

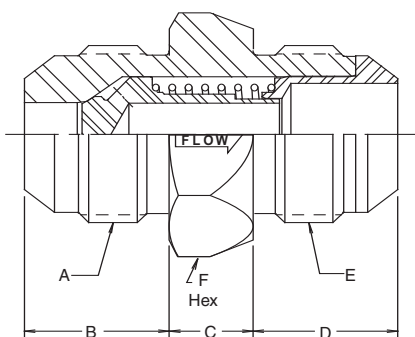
Male Seal-Lok® Inlet to Male Seal-Lok® Outlet

Check Valves

Specifications

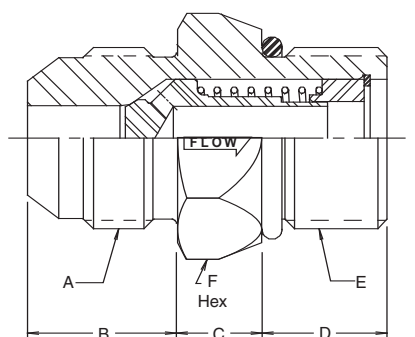
The DT Series check valves have a Maximum Operating Pressure of 5000 PSI. Standard Crack Pressures are 1, 5, and 65 PSI. Other Crack Pressures up to 200 PSI in 5 PSI increments are available upon request.

DT-MFMF Male Flare 37° JIC Inlet to Male Flare 37° JIC Outlet



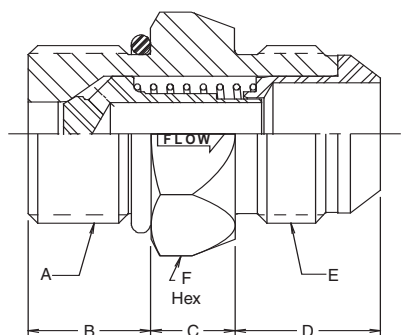
Valve Size (inch)	Part Number	Inlet Port Thread	Dimensions (in)				Outlet Port Thread	Hex Size (inch)	** Std Crack Pressures (PSI)
			A	B	C	D			
3/8	DT-370-MFMF-**	9/16-18 UNF	.56	.44	.56	9/16-18 UNF	.75	1, 5, 65	
1/2	DT-500-MFMF-**	3/4-16 UNF	.66	.50	.66	3/4-16 UNF	.88	5, 65	
5/8	DT-620-MFMF-**	7/8-14 UNF	.76	.50	.76	7/8-14 UNF	1.06	5	
3/4	DT-750-MFMF-**	1-1/16 - 12 UN	.86	.50	.86	1-1/16 - 12 UN	1.25	1, 5, 65	
1	DT-1000-MFMF-**	1-5/16 - 12 UN	.91	.62	.91	1-5/16 - 12 UN	1.50	5, 65	
1-1/4	DT-1250-MFMF-**	1-5/8 - 12 UN	.96	1.06	.96	1-5/8 - 12 UN	1.88	1, 5	

DT-MFMO Male Flare 37° JIC Inlet to Male O-Ring Boss Outlet



Valve Size (inch)	Part Number	Inlet Port Thread	Dimensions (in)				Outlet Port Thread	Hex Size (inch)	** Std Crack Pressures (PSI)
			A	B	C	D			
1/4	DT-250-MFMO-**	7/16-20 UNF	.55	.44	.43	7/16-20 UNF	.62	5	
3/8	DT-370-MFMO-**	9/16-18 UNF	.56	.44	.47	9/16-18 UNF	.75	1, 5, 65	
1/2	DT-500-MFMO-**	3/4-16 UNF	.66	.50	.55	3/4-16 UNF	.88	5, 65	
5/8	DT-620-MFMO-**	7/8-14 UNF	.76	.50	.63	7/8-14 UNF	1.06	5	
3/4	DT-750-MFMO-**	1-1/16 - 12 UN	.86	.50	.73	1-1/16 - 12 UN	1.25	1, 5, 65	
1	DT-1000-MFMO-**	1-5/16 - 12 UN	.91	.62	.73	1-5/16 - 12 UN	1.50	5, 65	
1-1/4	DT-1250-MFMO-**	1-5/8 - 12 UN	.96	1.06	.73	1-5/8 - 12 UN	1.88	1, 5	

DT-MOMF Male O-Ring Boss Inlet to Male Flare 37° JIC Outlet

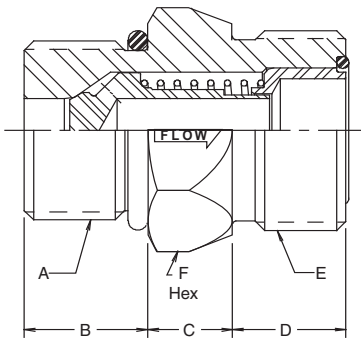


Valve Size (inch)	Part Number	Inlet Port Thread	Dimensions (in)				Outlet Port Thread	Hex Size (inch)	** Std Crack Pressures (PSI)
			A	B	C	D			
1/4	DT-250-MOMF-**	7/16-20 UNF	.43	.44	.55	7/16-20 UNF	.62	5	
3/8	DT-370-MOMF-**	9/16-18 UNF	.47	.44	.56	9/16-18 UNF	.75	1, 5, 65	
1/2	DT-500-MOMF-**	3/4-16 UNF	.55	.50	.66	3/4-16 UNF	.88	5, 65	
5/8	DT-620-MOMF-**	7/8-14 UNF	.63	.50	.76	7/8-14 UNF	1.06	5	
3/4	DT-750-MOMF-**	1-1/16 - 12 UN	.73	.50	.86	1-1/16 - 12 UN	1.25	1, 5, 65	
1	DT-1000-MOMF-**	1-5/16 - 12 UN	.73	.62	.91	1-5/16 - 12 UN	1.50	5, 65	
1-1/4	DT-1250-MOMF-**	1-5/8 - 12 UN	.73	1.06	.96	1-5/8 - 12 UN	1.88	1, 5	

DT Series

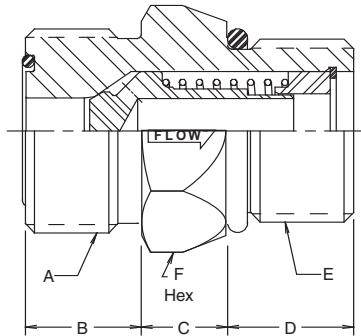
Check Valves

DT-MOMS Male O-Ring Boss Inlet to Male Seal-Lok® Outlet



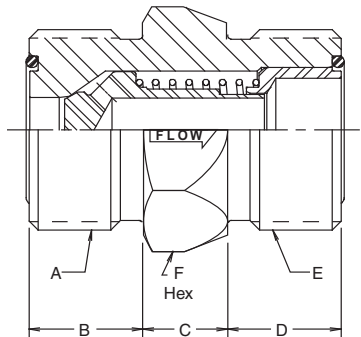
Valve Size (inch)	Part Number	Inlet Port Thread	Dimensions (in)				Outlet Port Thread	Hex Size (inch)	** Std Crack Pressures (PSI)
			A	B	C	D			
1/4	DT-250-MOMS-**	7/16-20 UNF	.43	.45	.39		9/16-18 UNF	.62	5
3/8	DT-370-MOMS-**	9/16-18 UNF	.47	.44	.44		11/16-16 UN	.75	1, 5, 65
1/2	DT-500-MOMS-**	3/4-16 UNF	.55	.50	.51		13/16-16 UN	.88	5, 65
5/8	DT-620-MOMS-**	7/8-14 UNF	.63	.50	.62		1-14 UNS	1.06	5
3/4	DT-750-MOMS-**	1-1/16 - 12 UN	.73	.50	.68		1-3/16 - 12 UN	1.25	1, 5, 65
1	DT-1000-MOMS-**	1-5/16 - 12 UN	.73	.62	.70		1-7/16 - 12 UN	1.50	5, 65
1-1/4	DT-1250-MOMS-**	1-5/8 - 12 UN	.73	1.06	.70		1-11/16 - 12 UN	1.88	1, 5

DT-MSMO Male Seal-Lok® Inlet to Male O-Ring Boss Outlet



Valve Size (inch)	Part Number	Inlet Port Thread	Dimensions (in)				Outlet Port Thread	Hex Size (inch)	** Std Crack Pressures (PSI)
			A	B	C	D			
3/8	DT-370-MSMO-**	11/16-16 UN	.44	.44	.47		9/16-18 UNF	.75	1, 5, 65
1/2	DT-500-MSMO-**	13/16-16 UN	.51	.50	.55		3/4-16 UNF	.88	5, 65
5/8	DT-620-MSMO-**	1-14 UNS	.62	.49	.63		7/8-14 UNF	1.06	5
3/4	DT-750-MSMO-**	1-3/16 - 12 UN	.68	.50	.73		1-1/16 - 12 UN	1.25	1, 5, 65
1	DT-1000-MSMO-**	1-7/16 - 12 UN	.70	.62	.73		1-5/16 - 12 UN	1.50	5, 65
1-1/4	DT-1250-MSMO-**	1-11/16 - 12 UN	.70	1.06	.73		1-5/8 - 12 UN	1.88	1, 5

DT-MSMS Male Seal-Lok® Inlet to Male Seal-Lok® Outlet

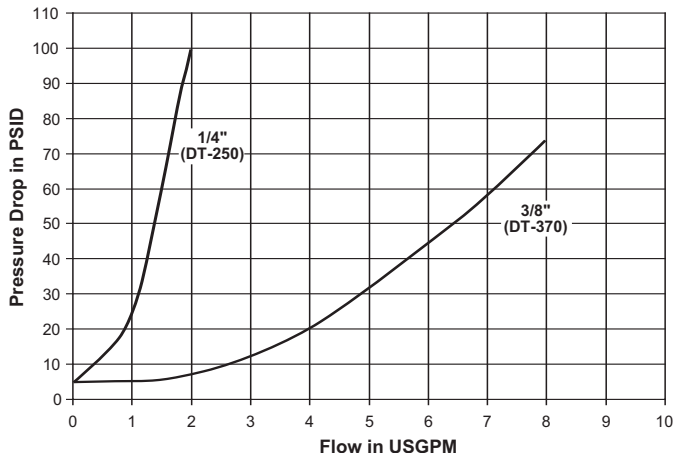


Valve Size (inch)	Part Number	Inlet Port Thread	Dimensions (in)				Outlet Port Thread	Hex Size (inch)	** Std Crack Pressures (PSI)
			A	B	C	D			
3/8	DT-370-MSMS-**	11/16-16 UN	.44	.44	.44		11/16-16 UN	.75	1, 5, 65
1/2	DT-500-MSMS-**	13/16-16 UN	.51	.50	.51		13/16-16 UN	.88	5, 65
5/8	DT-620-MSMS-**	1-14 UNS	.62	.50	.62		1-14 UNS	1.06	5
3/4	DT-750-MSMS-**	1-3/16 - 12 UN	.68	.50	.68		1-3/16 - 12 UN	1.25	1, 5, 65
1	DT-1000-MSMS-**	1-7/16 - 12 UN	.70	.62	.70		1-7/16 - 12 UN	1.50	5, 65
1-1/4	DT-1250-MSMS-**	1-11/16 - 12 UN	.70	1.06	.70		1-11/16 - 12 UN	1.88	1, 5

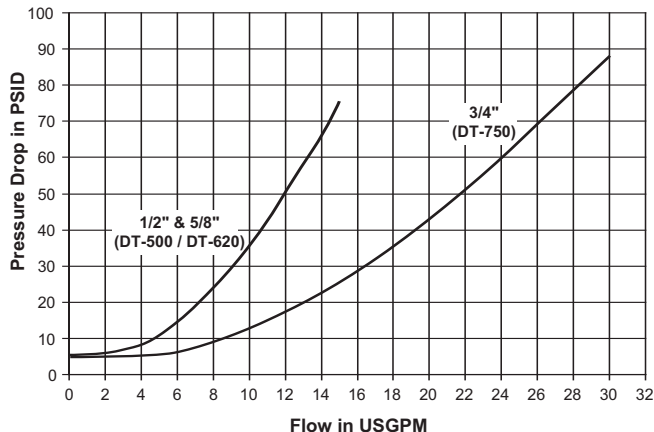
Check Valves

Flow Data

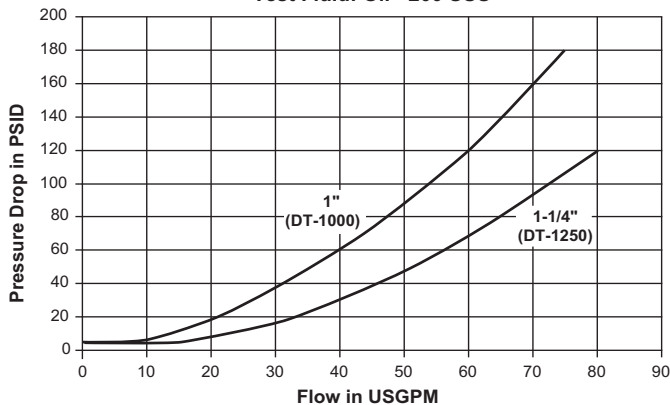
DT Series (1/4" & 3/8")
Test Fluid: Oil - 200 SUS



DT Series (1/2", 5/8" & 3/4")
Test Fluid: Oil - 200 SUS

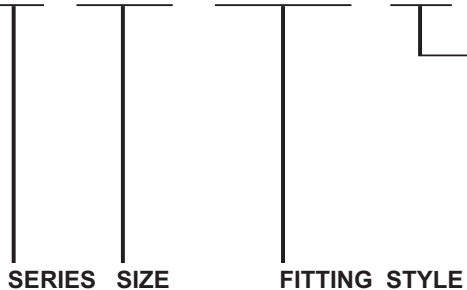


DT Series (1" & 1-1/4")
Test Fluid: Oil - 200 SUS



Ordering Information

DT - * * * - * * * * - * *



CRACK PRESSURE

- 1 - 1 PSI
 - 5 - 5 PSI
 - 65 - 65 PSI
- Other Crack Pressures up to 200 PSI in 5 PSI increments are available. Contact the Division for price and delivery on non-standard crack pressures

SERIES	SIZE	FITTING STYLE
250	1/4"	MFMF - Male Flare Inlet to Male Flare Outlet
370	3/8"	MFMO - Male Flare Inlet to Male O-Ring Boss Outlet
500	1/2"	MOMF - Male O-Ring Boss Inlet to Male Flare Outlet
620	5/8"	MOMS - Male O-Ring Boss Inlet to Male Face Seal Outlet
750	3/4"	MSMO - Male Face Seal Inlet to Male O-Ring Boss Outlet
1000	1"	MSMS - Male Face Seal Inlet to Male Face Seal Outlet
1250	1-1/4"	



E Check Valves