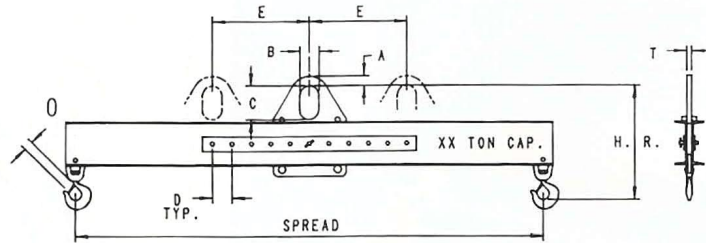


# Model 24 - Adjustable Bail Lifting Beam

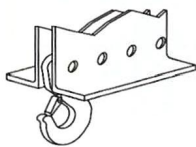
## PRODUCT FEATURES:

- Handles off center loads by adjusting the bail before a lift.
- Adjustable spread options available.
- Swivel hooks with hook latches standard.
- Wide range of sizes and capacities available.
- Designed and manufactured to ASME standards.



## SPECIFICATIONS

Rated Capacity (tons)	Model Number	Headroom (in.)	Weight (lbs.)	Spread (feet)								Other Dimensions (in.)	
				3	4	6	8	10	12	14	16	18	20
1/2	Model Number	24-1/2-3	24-1/2-4	24-1/2-6	24-1/2-8	24-1/2-10	24-1/2-12	24-1/2-14	24-1/2-16	24-1/2-18	24-1/2-20	A=1-1/2	T=5/8
	Headroom	13-1/2	13-1/2	13-1/2	12-5/8	13-1/2	13-1/2	13-1/2	14-1/2	14-1/2	14-1/2	B=3	O=1
	Weight	47	56	75	82	95	147	168	255	278	304	C=5	
1	Model Number	24-1-3	24-1-4	24-1-6	24-1-8	24-1-10	24-1-12	24-1-14	24-1-16	24-1-18	24-1-20	A=1-1/2	T=5/8
	Headroom	13-1/2	13-5/8	13-5/8	14-5/8	14-5/8	14-5/8	15-5/8	15-5/8	16-1/2	16-1/2	B=3	O=1
	Weight	47	56	83	126	170	198	268	298	409	449	C=5	
2	Model Number	24-2-3	24-2-4	24-2-6	24-2-8	24-2-10	24-2-12	24-2-14	24-2-16	24-2-18	24-2-20	A=1-1/2	T=3/4
	Headroom	14	15-1/8	15-1/8	16-1/8	18-1/2	17-1/8	18-1/4	18-1/4	19-1/2	19-1/2	B=3	O=1
	Weight	48	89	117	170	240	278	369	416	547	605	C=5	
5	Model Number	24-5-3	24-5-4	24-5-6	24-5-8	24-5-10	24-5-12	24-5-14*	24-5-16*	24-5-18*	24-5-20*	A=2	T=1
	Headroom	21-1/2	21-1/2	21-1/2	22-1/2	23-1/2	27	27	28	29	30-3/8	B=4	O=1
	Weight	140	160	215	304	430	633	664	746	1321	1525	C=7	O=1-1/2*
10	Model Number	24-10-3	24-10-4	24-10-6	24-10-8	24-10-10	24-10-12	24-10-14	24-10-16	24-10-18	24-10-20	A=2	T=1-1/4
	Headroom	25-3/4	25-3/4	28-3/4	28-3/4	31-3/4	31-3/4	31-3/4	31-3/4	34-3/4	34-3/4	B=4	O=1-3/4
	Weight	210	211	432	522	759	993	1128	1257	1738	1908	C=7	
15	Model Number	24-15-3	24-15-4	24-15-6	24-15-8	24-15-10	24-15-12	24-15-14	24-15-16			A=2-1/2	T=1-1/2
	Headroom	28-1/4	30-1/2	33-1/2	33-1/2	33-1/2	37	37	37			B=5	O=2
	Weight	252	330	502	542	882	1455	1630	1800			C=9	
20	Model Number	24-20-3	24-20-4	24-20-6	24-20-8	24-20-10	24-20-12					A=2-1/2	T=1-1/2
	Headroom	31	34	37	34	37	37					B=5	O=2
	Weight	315	399	735	720	1276	1251					C=9	
Other Dimensions (in.)	D=3 E=6	D=3 E=9	D=3 E=12	D=4 E=16	D=4 E=20	D=4 E=24	D=6 E=30	D=6 E=36	D=6 E=42	D=6 E=48			

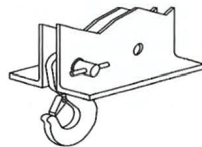


### OPTION A\*

#### EXTRA HOLES.

Allows for multiple hook positioning. Specify number and spread(s) required.

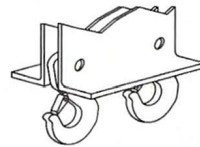
\*Could increase headroom dimension, consult factory.



### OPTION B

#### FASPINS.

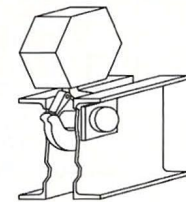
For ease of positioning hooks with quick release. Specify number of faspins required.



### OPTION C

#### EXTRA HOOKS.

Allows for multiple pick points. Specify number of hooks required.



### OPTION D

#### LOWER HEADROOM.

Lifting pin located between structural channel. (Hoist hook information must be supplied.)