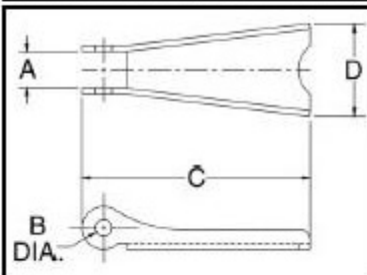




LATCH ORDERING INSTRUCTIONS

- ◆ Specify latch kit stock number
- ◆ Specify capacity of hook to which latch will be assembled.
- ◆ Specify hook material (carbon or alloy).

NOTE: These latches will not work on new "N" style Hooks.



SS-4055 Latch Kits

- ◆ Stainless steel construction with cadmium plated steel nuts.
- ◆ Shipped packaged and unassembled.
- ◆ Instructions included for easy field assembly.

Hook Size (t)			Hook ID Code	SS-4055 Stock No.	Weight Each (lbs.)	Dimensions (in.)			
Carbon	Alloy	Bronze				A	B	C	D
3/4	1	.5	D	1090027	.02	.38	.16	1.44	.59
1	1-1/2	.6	F	1090045	.02	.38	.16	1.60	.59
1-1/2 - 2	2-3	1.0-1.4	G/H	1090063	.03	.47	.19	1.84	.82
3	4-1/2	2.0	I	1090081	.06	.56	.17	2.41	1.00
5	7	3.5	J	1090107	.11	.58	.20	2.97	1.21
7-1/2 - 10	11-15	5.0-6.5	K/L	1090125	.17	.59	.27	3.66	1.50
15	22	10.0	N	1090143	.39	.83	.39	4.94	1.90
20	30	-	O	1090161	.63	.94	.52	5.88	2.56
25 - 30	37-45	-	P/S	1090189	1.12	2.19	.39	6.50	3.84
40	60	-	T	1090205	1.77	3.31	.52	7.88	4.12