



### Applications

Parker's 6100 Series, is a thread-to-connect low spill coupling that can be used in a wide range of industrial applications where connected under pressure is required. The 6100 is ideal for connecting hydraulic lines on oil field equipment like power tongs, swivels and mobile drilling rigs. It is also widely used on dump trailers to connect the tractor to wet-line hydraulic systems.

The 6100 Series is suitable for many applications where high flow connect under pressure couplings are required. Other uses include: submersible pumps, engine test stands, and bulk liquid CO2 transfer (Special part numbers apply – contact the Division).

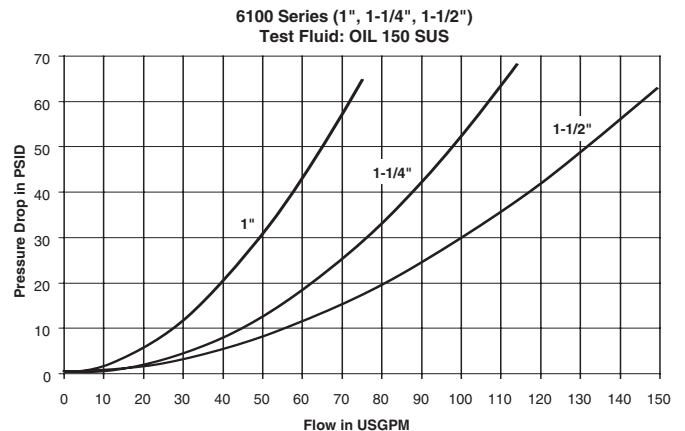
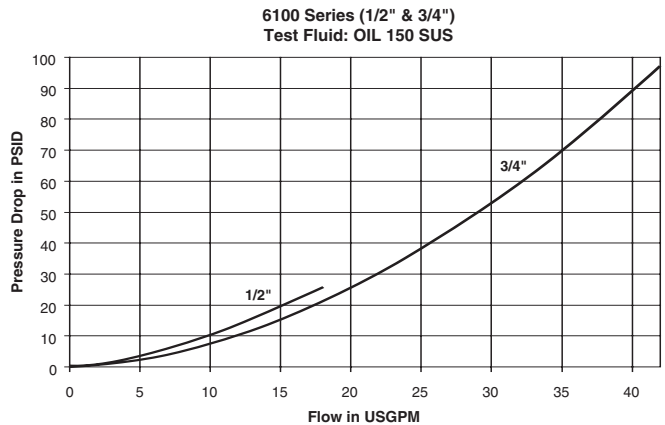
**Note:** Protective dust plugs and caps play a crucial role in the life of a quick coupling and no purchase of a hydraulic quick coupling is complete without the selection of an appropriate dust plug and cap. See pages noted in Table of Contents for dust plugs and caps for the Parker full line of hydraulic couplings.

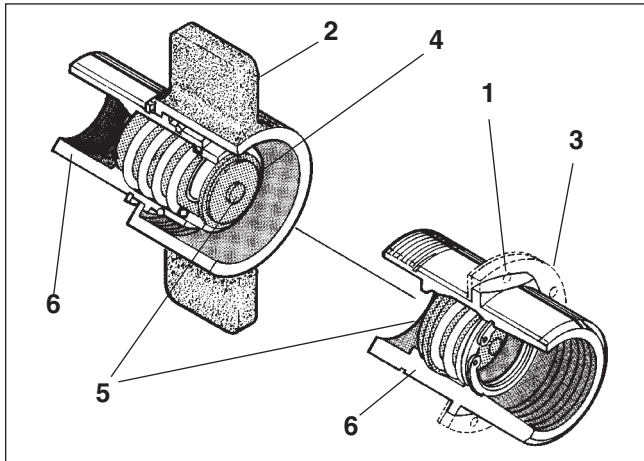
### Specifications

| Body Size (in.)               | 3/4             | 3/4  | 1    | 1-1/4 | 1-1/2 |
|-------------------------------|-----------------|------|------|-------|-------|
| Dash Number                   | -08             | -12  | -16  | -20   | -24   |
| *Rated Pressure (PSI)         |                 |      |      |       |       |
| Female Half                   | 3000            | 3000 | 3000 | 2750  | 2000  |
| Male Half                     | 3000            | 3000 | 3000 | 2500  | 2500  |
| Complete Coupling Assembly    | 3000            | 3000 | 3000 | 2750  | 2500  |
| Rated Flow (GPM)              | 12              | 28   | 50   | 76    | 100   |
| Temperature Range (std seals) | -40° to +250°F. |      |      |       |       |

\* Minimum burst pressure is equal to three times the rated pressure. Not recommended for continuous hydraulic impulse applications at rated pressures.

### Performance



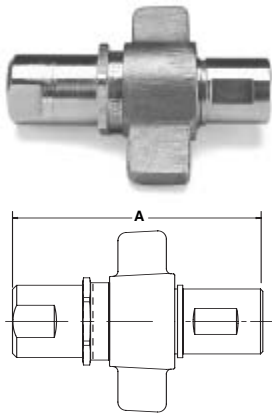


**Features**

1. The connection indicator, a Parker innovation, serves as a visual check for complete connection of the 6100 coupling. It helps prevent premature failures and leaks. It assures that the connection is complete and the valves fully open, eliminating unnecessary flow restriction. (see drawing on next page)
2. The Parker heavy-duty wing nut is ruggedly built—specifically to withstand the hammer blows commonly used to tighten and loosen this coupler.
3. The flange is designed to give a positive “no-slip” bulkhead mounting to reduce downtime.
4. The bonded valve seal permits full pressure connect and disconnect—without seal washout.
5. The flush face valve keeps air inclusion and spillage to a minimum.
6. Corrosion resistant brass body makes this coupling compatible with a broad range of media and provides versatility.

**6100 Series**

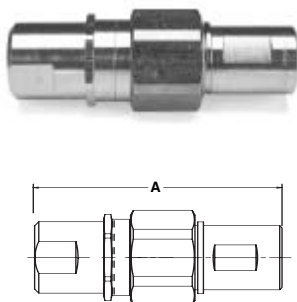
**Coupling with Wingnut**



| Body Size (in.) | Thread Size NPTF | Part No. With Flange | Part No. Without Flange | Overall Connected Length | Wt. (LB.) P/Piece |
|-----------------|------------------|----------------------|-------------------------|--------------------------|-------------------|
| <b>A</b>        |                  |                      |                         |                          |                   |
| 3/4             | 1/2-14           | 6100-08              | 6120-08                 | 5.20                     | 2.12              |
| 3/4             | 3/4-14           | 6100-12              | 6120-12                 | 5.20                     | 3.27              |
| 1               | 1-11 1/2         | 6100-16              | 6120-16                 | 5.99                     | 3.19              |
| 1 1/4           | 1 1/4-11 1/2     | 6100-20              | 6120-20                 | 6.33                     | 2.73              |
| 1 1/2           | 1 1/2-11 1/2     | 6100-24              | 6120-24                 | 6.55                     | 3.52              |

**6100 Series**

**Coupling with Hex Nut**



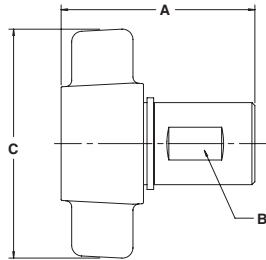
| Body Size (in.) | Thread Size NPTF | Part No. With Flange | Part No. Without Flange | Overall Connected Length | Wt. (LB.) P/Piece |
|-----------------|------------------|----------------------|-------------------------|--------------------------|-------------------|
| <b>A</b>        |                  |                      |                         |                          |                   |
| 3/4             | 1/2-14           | 6110-08              | 6130-08                 | 5.20                     | 1.89              |
| 3/4             | 3/4-14           | 6110-12              | 6130-12                 | 5.20                     | 1.83              |
| 1               | 1-11 1/2         | 6110-16              | 6130-16                 | 5.99                     | 2.93              |
| 1 1/4           | 1 1/4-11 1/2     | 6110-20              | 6130-20                 | 6.33                     | 4.12              |
| 1 1/2           | 1 1/2-11 1/2     | 6110-24              | 6130-24                 | 6.55                     | 5.95              |

# Hydraulic Quick Couplings

# Connect Under Pressure Couplings 6100 Series

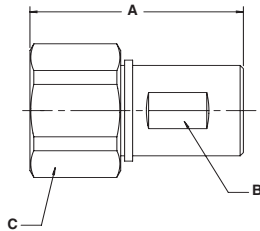
## Couplers

### Wing Nut



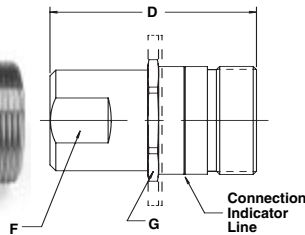
| Body Size (in.) | Part No. Brass | Thread Size NPTF | Dimensions (in.) |              |          | Wt. (LB.) P/Piece |
|-----------------|----------------|------------------|------------------|--------------|----------|-------------------|
|                 |                |                  | Overall Length   | Wrench Flats | Wing Nut |                   |
|                 |                |                  | A                | B            | C        |                   |
| 3/4             | 6125-08        | 1/2-14           | 3.22             | 1.16         | 4.06     | 1.30              |
| 3/4             | 6125-12        | 3/4-14           | 3.22             | 1.16         | 4.06     | 1.26              |
| 1               | 6125-16        | 1-11 1/2         | 3.87             | 1.43         | 4.38     | 1.89              |
| 1 1/4           | 6125-20        | 1 1/4-11 1/2     | 4.16             | 1.78         | 5.20     | 2.84              |
| 1 1/2           | 6125-24        | 1 1/2-11 1/2     | 4.34             | 2.00         | 5.32     | 3.72              |

### Hex Nut



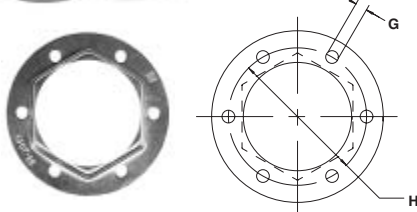
| Body Size (in.) | Part No. Brass | Thread Size NPTF | Dimensions (in.) |              |          | Wt. (LB.) P/Piece |
|-----------------|----------------|------------------|------------------|--------------|----------|-------------------|
|                 |                |                  | Overall Length   | Wrench Flats | Hex Size |                   |
|                 |                |                  | A                | B            | C        |                   |
| 3/4             | 6135-08        | 1/2-14           | 3.22             | 1.16         | 1.75     | 1.07              |
| 3/4             | 6135-12        | 3/4-14           | 3.22             | 1.16         | 1.75     | 1.07              |
| 1               | 6135-16        | 1-11 1/2         | 3.87             | 1.43         | 2.13     | 1.63              |
| 1 1/4           | 6135-20        | 1 1/4-11 1/2     | 4.16             | 1.78         | 2.50     | 2.47              |
| 1 1/2           | 6135-24        | 1 1/2-11 1/2     | 4.34             | 2.00         | 2.75     | 3.15              |

### Nipples



| Body Size (in.) | Part No. Without Flange Brass | With Flange Brass | Thread Size NPTF | Dimensions (in.) |          |              | Wt. (LB.) P/Piece |
|-----------------|-------------------------------|-------------------|------------------|------------------|----------|--------------|-------------------|
|                 |                               |                   |                  | Overall Length   | Hex Size | Wrench Flats |                   |
|                 |                               |                   |                  | D                | G        | F            |                   |
| 3/4             | 6105-08                       | 6115-08           | 1/2-14           | 3.11             | 1.62     | 1.18         | 0.82              |
| 3/4             | 6105-12                       | 6115-12           | 3/4-14           | 3.11             | 1.62     | 1.18         | 0.76              |
| 1               | 6105-16                       | 6115-16           | 1-11 1/2         | 3.55             | 1.88     | 1.56         | 1.30              |
| 1 1/4           | 6105-20                       | 6115-20           | 1 1/4-11 1/2     | 3.71             | 2.13     | 1.88         | 1.65              |
| 1 1/2           | 6105-24                       | 6115-24           | 1 1/2-11 1/2     | 4.12             | 2.50     | 2.18         | 2.61              |

### Flanges



| Body Size (in.) | Part No. Steel    | Dimensions (in.)   |                      |
|-----------------|-------------------|--------------------|----------------------|
|                 |                   | Bolt Hole Diameter | Bolt Circle Diameter |
|                 |                   | G                  | H                    |
| 3/4             | 6107-08 (1 piece) | .208               | 2.125                |
| 1               | 6107-16 (1 piece) | .208               | 2.375                |
| 1 1/4           | 6107-20 (2 piece) | .208               | 2.625                |
| 1 1/2           | 6107-24 (2 piece) | .281               | 3.250                |

