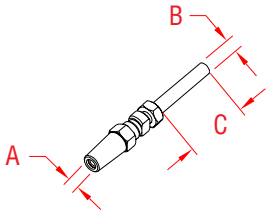


# RAILEASY™ STUD

316L STAINLESS STEEL



ITEM

A

B

C

WT

(cable)

(lb)

S0980-0003

5/32"

1/4"-28

1.75"

0.07

**NOTE:**

**Patented tensioner stud is used on one side of a cable railing application. A RailEasy™ Tensioner (S0981-0004) is needed at the other side for tensioning capabilities. Stud is UNF threaded.**

