

# Pipe & Manhole Handling

## Model PC - "Tea Cup" Pipe Carrier



**IN-STOCK  
PROGRAM**

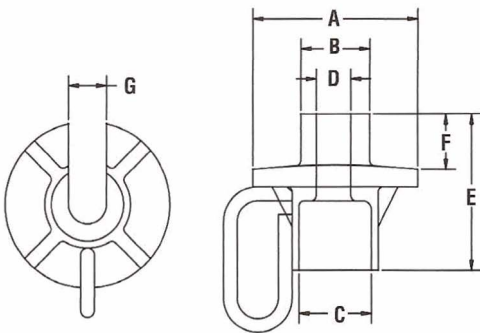
### PRODUCT FEATURES:

- An efficient way to handle concrete water and sewer pipes.
- The Caldwell "Tea Cup" Carrier will save you time and money.
- Three sizes available, to handle from 3/4" to 1-1/2" cable, and lift up to 18 tons.
- Optional "Spoon" handle allows the PC-3/4 "Tea Cup" to be guided into small diameter pipes.
- Designed and manufactured to ASME B30.20 and B30.9.

### SPECIFICATIONS

Model Number	Rated Capacity Tons	Dimensions in Inches							Weight (lbs)
		A	B	C	D	E	F	G	
PC-3/4*	6.6	5 9/16	2	2 1/8	1 1/8	4 3/4	1 3/4	1 1/8	9
PC-1	13	6	2 1/2	2 5/8	1 3/8	5 3/4	1 3/4	1 3/8	12
PC-1 1/2	18	8	3	3 1/4	1 5/8	7 5/8	2 3/4	1 5/8	22

\*Can use 'Spoon' handle with this model.



### NEW MODEL

#### Low Profile "Tea Cup" Pipe Carrier

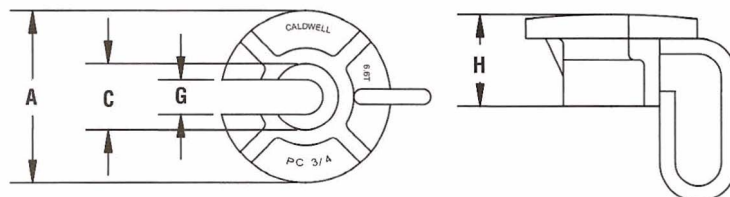
Same as standard model plus:

- Only wire rope needs to be inserted through pipe.

### SPECIFICATIONS

Model Number	Rated Capacity Tons	Dimensions in Inches				Weight (lbs.)
		A	C	H	G	
PC-3/4-F*	6.6	5 9/16	2 1/8	3 7/16	1 1/8	9
PC-1-F	13	6	2 5/8	4 3/8	1 3/8	12
PC-1 1/2-F	18	8	3 1/4	5 1/8	1 5/8	22

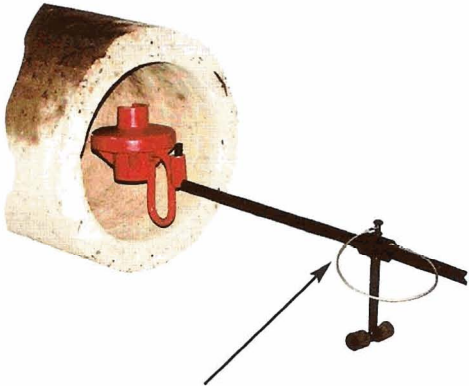
\*Can use "Spoon" handle with this model.



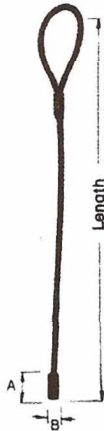
# Pipe & Manhole Handling

## "Tea Cup" Pipe Carrier Options

**"Spoon" Handle Option - SH**  
Length 61.1" with slight bend for ease of use.



"Spoon" handle for PC-3/4 only  
please order SH-3/4  
(Includes bolt on lip)



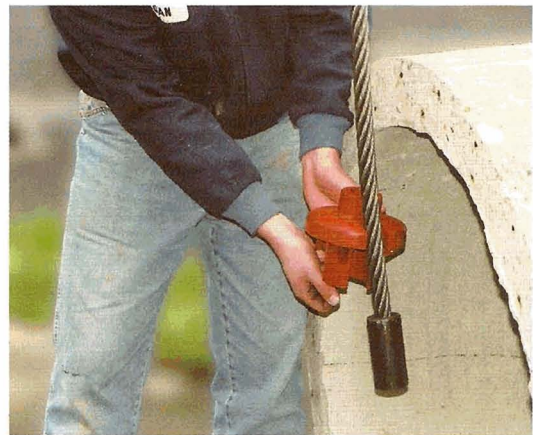
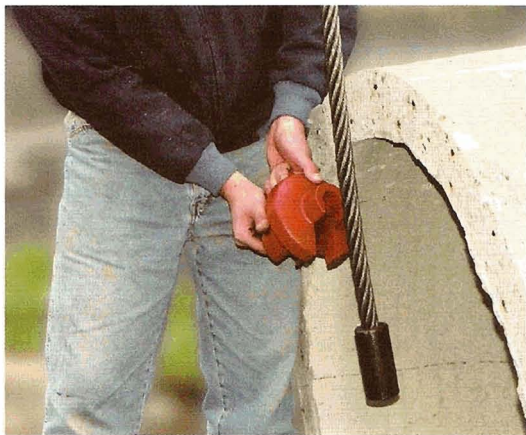
**"Tea Cup" Lifting Sling Option - LS**

### SPECIFICATIONS

Use With	Model Number	Rated Capacity Tons	Sling Dia. (in.)	Standard Length (ft.)	After Swage Dim. (in)		WT. (lbs.)
					A	B	
PC-3/4	LS-3/4	4.9	3/4	5	3.25	1.55	9
	LS-7/8	6.6	7/8	5	3.86	1.80	14
PC-1	LS-1	8.5	1	5	4.36	2.05	19
	LS-1 1/8	10	1 1/8	5	4.81	2.30	26
	LS-1 1/4	13	1 1/4	5	5.42	2.56	33
PC-1 1/2	LS-1 1/2	18	1 1/2	5	6.52	3.00	52

In-stock on standard 5' length only.

## Operation



Drop pipe carrier lifting sling through hole in pipe. Align and insert "tea cup" pipe carrier into lifting sling.



Once set, you are ready to lift the pipe.